

CLT, - product – and tastetests.

How we deal with the Covid 19-situation.

Particular information re. the Covid 19-situation.

May 2020.

Faktum Markedsanalyse, Norway.

**Procedure when testing products and visits to the test facility.
Especially for the Covid 19-situation.**

May 2020

A written question is presented to the respondent upon arrival, and answered in writing: "Do you have Corona symptoms"?

Respondents who do not want to answer the question or who confirm symptoms, are rejected.
The respondent washes his hands, either with antiviral disinfectant or soap and water.

Each respondent receives 1 test-unit.
E.g. 1 plate and 1 spoon, - 1 glass, - 1 taste test. The test-unit is numbered.

The test-unit is supplied by a person with infection control equipment; - approved mouth-band, apron and disposable gloves.

If the respondent is to test multiple variants, the procedure is repeated.

The respondent brings with him the test unit, - which no one has touched except himself, - a questionnaire or tablet, and sits down at a table. A 2-meters distance is kept between the tables.

The respondent gives a signal when he is finished, and leaves the premises.
All used material is disposed of in a garbage bag by the respondent.

The questionnaire is collected at the table. Possible tablet is wiped clean with antiviral disinfectant.

No gift cards or physical gifts are given to the respondent.
Incentives are Vippsed/Zwiped. (mobile banking system).



Norwegian Food Safety
Authority

» NOTIFY US

Search in mattilsynet.no



You are here: [Home](#) / [Language](#) / [English](#) / [Fish and aquaculture](#) / [Sea food from Norway](#) / The coronavirus does not affect seafood safety

The coronavirus does not affect seafood safety

Published 24.03.2020 Modified 24.03.2020 Print this

There are no known cases of contamination of the coronavirus via contaminated food or water.

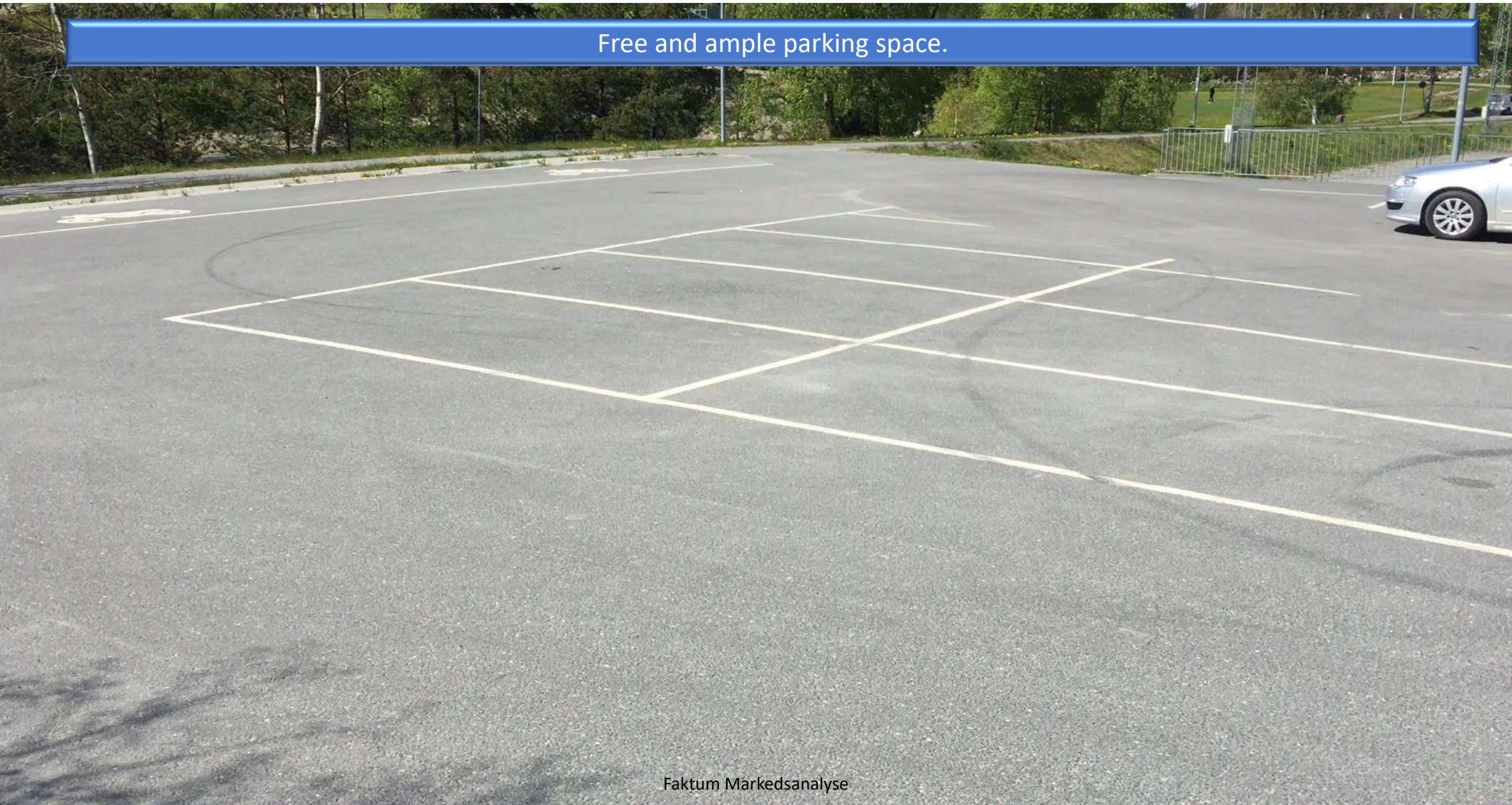
Based on w | The of the coronavirus, it is

Les mer

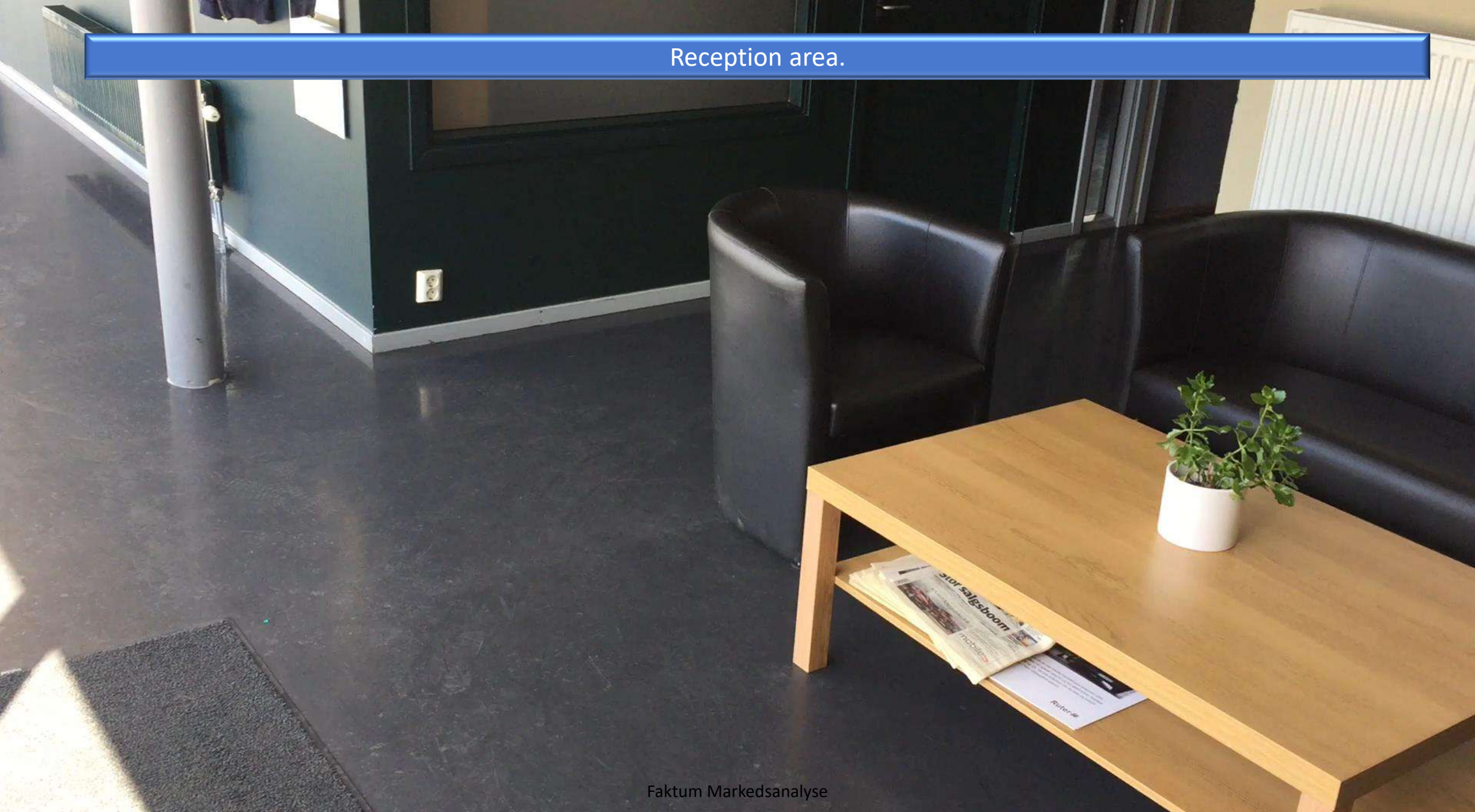
[World Health Organization \(WHO\): Coronavirus disease \(COVID-19\) outbreak](#)

[World Health Organization \(WHO\): Water, sanitation, hygiene and waste management for COVID-19](#)

Free and ample parking space.



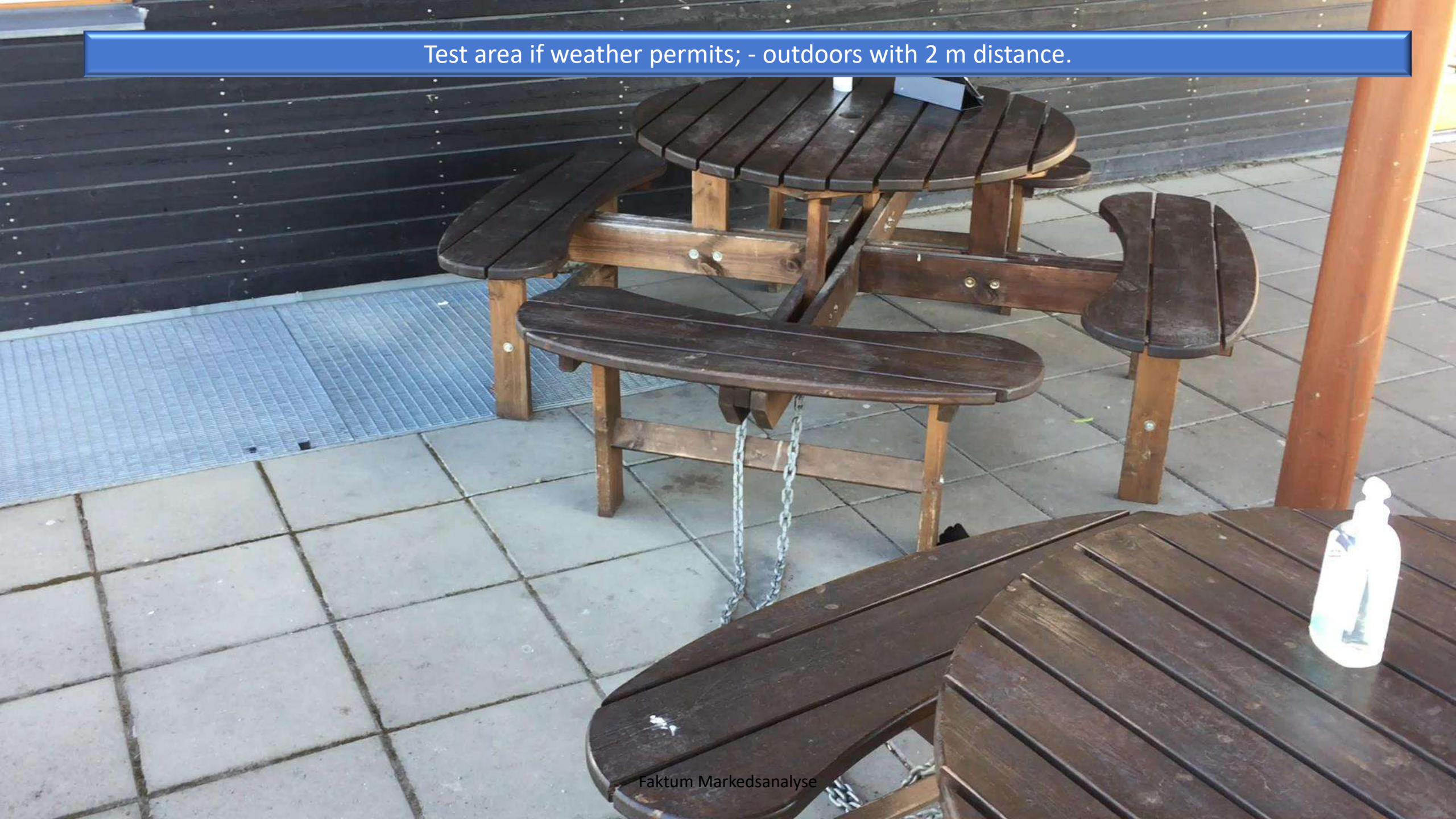
Reception area.



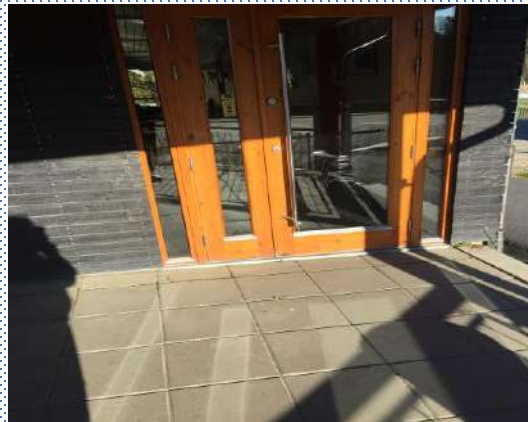
Important: Washing of hands.



Test area if weather permits; - outdoors with 2 m distance.



Test in progress.



Entrance to kitchen and indoor test area.

Indoor test area

